

## Data Networking Product Pocket Guide



# OmniSwitch 9000 Chassis LAN Switch

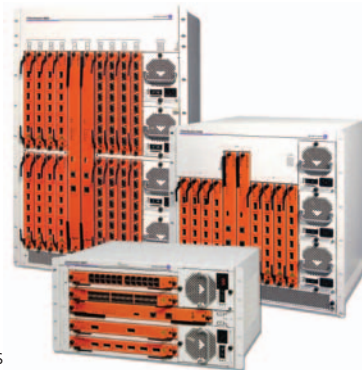
The new OmniSwitch 9000 (OS9000) switch family addresses the needs of network administrators: high availability, wire-speed performance, high density GigE and 10GigE, and offers dramatically improved network response time. These capabilities ensure an easy and economical way to upgrade or deploy a new Ethernet network. The large number of ports makes the OmniSwitch 9000s suitable for two- or three-tier network designs. This is possible because of the high performance capability and density of GigE and 10GigE. OS9000 also future proofs the network with its native and full support for simultaneous IPv4 and IPv6, addressing the need for a smooth migration from IPv4 to IPv6 or even pure IPv6 deployments.

The OS9000s are engineered to be deployed in the Enterprise network:

- in the core layer
- at the aggregation layer
- in the data center

They can also be deployed in the wiring closet when a chassis solution is required for the highest availability and performances.

- Carrier-class architecture
- Enterprise core and backbone applications
- High-density Gigabit Ethernet aggregation
- Large data centers and server farms
- Enterprise 10 Gigabit Ethernet MANs
- High performance
- Best green IT solution



Product	Part No.	Notes
<b>CHASSIS</b>		<b>Next Generation 10GigE Modular Switch</b>
<b>OS9600 Bundle</b>	OS9600-CB-A	5-slot chassis, 1 x OS9600-CMM, 1 x PSU AC, fan tray
<b>OS9600 Redundant Bundle</b>	OS9600-RCB-A	5-slot chassis, 1 x OS9600-CMM, 2 x PSU AC, fan tray
<b>OS9600 Chassis</b>	OS9600CHASSIS	5-slot chassis & fan tray
<b>OS9700 Bundle</b>	OS9700-CB-A	10-slot chassis, 1 x OS9700-CMM, 2 x PSU AC, fan tray
<b>OS9700 Redundant Bundle</b>	OS9700-RCB-A	10-slot chassis, 2 x OS9700-CMM, 3 x PSU AC, fan tray
<b>OS9700 Chassis</b>	OS9700-CHASSIS	10-slot chassis & fan tray
<b>OS9800 Bundle</b>	OS9800-CB-A	18-slot chassis, 1 x OS9800-CMM, 3 x PSU AC, fan tray
<b>OS9800 Redundant Bundle</b>	OS9800-RCB-A	18-slot chassis, 2 x OS9800-CMM, 4 x PSU AC, fan tray
<b>OS9800 Chassis</b>	OS9800-CHASSIS	18-slot chassis & fan tray
<b>MODULES</b>		
<b>10 Gigabit Ethernet</b>	OS9-XNI-U2	2-port 10GigE XFP *
<b>10 Gigabit Ethernet</b>	OS9-XNI-U6	6-port 10GigE XFP *
<b>Gigabit Ethernet</b>	OS9-GNI-U24	24-port GigE SFP *
<b>Gigabit Ethernet</b>	OS9-GNI-C24	24-port GigE (10/100/1000) RJ45
<b>Gigabit Ethernet</b>	OS9-GNI-P24	24-port GigE (10/100/1000) RJ45 w/PoE **
<b>Gigabit Ethernet</b>	OS9-GNI-C48T	48-port GigE (10/100/1000) MRJ21
<b>Gigabit Ethernet</b>	OS9-GNI-C20L	20-port Fast Ethernet (10/100 – SW upgradeable to 10/100/1000) RJ45 and 2-port GigE (100/1000) SFP *

\* XFP/SFP transceivers sold separately

\*\* PoE operation to require a PoE power shelf & OS9-GNI-P24 module(s)

Product	Part No.	Notes
<b>TRANSCEIVERS</b>		
Dual Speed transceiver	SFP-DUAL-MM	Multi mode SFP, 100Base-FX or 1000Base-LX
Dual Speed transceiver	SFP-DUAL-SM10	Single mode SFP, 100Base-FX or 1000Base-LX
1000Base-SX transceiver	SFP-GIG-SX	Multi mode over 850nm wavelength, up to 300m
1000Base-SX extended transceiver	SFP-GIG-EXTND	Multi mode over 850nm wavelength, up to 2km
1000Base-LX transceiver	SFP-GIG-LX	Single mode over 1310nm wavelength, up to 10km
1000Base-LH transceiver	SFP-GIG-LH40	Single mode over 1310nm wavelength, up to 40km
1000Base-LH transceiver	SFP-GIG-LH70	Single mode over 1550nm wavelength, up to 70km
1000Base-T transceiver	SFP-GIG-T	Gigabit copper SFP, supports Cat 5, 5E, 6 cables, up to 100m.
CWDM transceiver - 1470nm	SFP-GIG-47CWD60	Single mode fiber over 1470nm wavelength, LC connector
CWDM transceiver - 1490nm	SFP-GIG-49CWD60	Single mode fiber over 1490nm wavelength, LC connector
CWDM transceiver - 1510nm	SFP-GIG-51CWD60	Single mode fiber over 1510nm wavelength, LC connector
CWDM transceiver - 1530nm	SFP-GIG-53CWD60	Single mode fiber over 1530nm wavelength, LC connector
CWDM transceiver - 1550nm	SFP-GIG-55CWD60	Single mode fiber over 1550nm wavelength, LC connector
CWDM transceiver - 1570nm	SFP-GIG-57CWD60	Single mode fiber over 1570nm wavelength, LC connector
CWDM transceiver - 1590nm	SFP-GIG-59CWD60	Single mode fiber over 1590nm wavelength, LC connector
CWDM transceiver - 1610nm	SFP-GIG-61CWD60	Single mode fiber over 1610nm wavelength, LC connector
10GE SR optical transceiver	XFP-10GE-SR	Multi mode fiber XFP up to 300m
10GE LR optical transceiver	XFP-10GE-LR	Single mode fiber XFP up to 10km
10GE ER optical transceiver	XFP-10GE-ER40	Single mode fiber XFP up to 40km
10GE ZR optical transceiver	XFP-10GE-ZR80	Single mode fiber XFP up to 80km
<b>SOFTWARE</b>		
Upgrade	OS9-C20L-UPG	Software upgrade for OS9-GNI-C20L (one license required per module) to provide 1000BASE-T support.



Product	Part No.	Notes
<b>POWER SUPPLIES &amp; SPARES</b>		
OS9600 Chassis Management Module	OS9600-CMM	CMM for OS-9600
OS9700 Chassis Management Module	OS9700-CMM	CMM for OS-9700
OS9800 Chassis Management Module	OS9800-CMM	CMM for OS-9800
OS9000 Power supply unit	OS9-PS-0600A	600 Watt PSU AC for OS9000
OS9000 Power supply unit (DC version)	OS9-PS-0600D	600 Watt PSU DC for OS9000
OS9000 PoE Power shelf **	OS9-IP-SHELF	External PoE rack for the OS9000 chassis. Rack to include 1 PSU
OS9000 PoE Power supply unit	OS9-IPS-0600A	600 watt PoE PSU for usage on OS9-IPSHELF only
OS9600 PoE Power shelf **	OS9-IPS-230A	230W PoE bundle for OS9600
OS9600 PoE Power shelf **	OS9-IPS-390A	390W PoE bundle for OS9600
OS9700/9800 Chassis Fan Assembly	OS9000-FTTC	Fan Assembly for OS9700 / OS9800 chassis
OS9600 Chassis Fan Assembly	OS9600-FTTC	Fan Assembly for OS9600 chassis

<b>ACCESSORIES &amp; PACKAGING</b>		
------------------------------------	--	--

Cabling Combo	MRJ21-COMBO-2	Cabling combo for the OS9-GNI-C48T. Combo includes 8 cables (MRJ21 to RJ45 - 2m long) & 1 patch panel (48-port RJ45 to 48-port RJ45 - 1 RU high)
Cabling Combo	MRJ21-COMBO-5	Cabling combo for the OS9-GNI-C48T. Combo includes 8 cables (MRJ21 to RJ45 - 5m long) & 1 patch panel (48-port RJ45 to 48-port RJ45 - 1 RU high)
Cabling Combo	MRJ21-COMBO-10	Cabling combo for the OS9-GNI-C48T. Combo includes 8 cables (MRJ21 to RJ45 - 10m long) & 1 patch panel (48-port RJ45 to 48-port RJ45 - 1 RU high)

\*\* PoE operation to require a PoE power shelf & OS9-GNI-P24 module(s)

# OmniSwitch 7000 Chassis LAN Switch

The Alcatel-Lucent OmniSwitch 7700 and 7800 Chassis LAN Switches are intelligent, multi-layer switching platforms that provide unmatched availability and intelligence. These platforms are part of Alcatel-Lucent's OmniSwitch chassis LAN switch product family, designed for IP Communications and mission-critical environments. The OmniSwitch 7000 series delivers high availability features and performance with simplified management for a wide range of enterprise environments. These switching platforms have been optimized to integrate all communications systems into a single infrastructure encompassing voice, data, video, storage, wired and wireless. The OmniSwitch 7000 series is also an ideal platform to use for migrating from ATM to Gigabit Ethernet, eliminating any migration hassles encountered.

- Highly resilient architecture
- Converged enterprise edge applications
- LAN aggregation/distribution
- IP telephony/LAN wiring closets
- Economical ATM to Gigabit Ethernet migration



Product	Part No.	Notes
<b>CHASSIS</b>		
<b>Modular Switch</b>		
OS7700 unit	OS7700-CB-A	10-slot chassis, 1 x OS7700-CMM, 2 x PSU AC, fan tray
OS7700 unit (DC version)	OS7700-CB-D	10-slot chassis, 1 x OS7700-CMM, 2 x PSU DC, fan tray
OS7700 Redundant unit	OS7700-RCB-A	10-slot chassis, 2 x OS7700-CMM, 3 x PSU AC, fan tray
OS7700 Redundant unit (DC version)	OS7700-RCB-D	10-slot chassis, 2 x OS7700-CMM, 3 x PSU DC, fan tray
OS7700 Redundant Upgrade	OS7700-RP-A	1 x OS7700-CMM and 1 x PSU AC
OS7700 Redundant Upgrade (DC version)	OS7700-RP-D	1 x OS7700-CMM and 1 x PSU DC
OS7800 unit	OS7800-CB-A	18-slot chassis, 1 x OS7800-CMM, 2 x PSU AC, fan tray
OS7800 unit (DC version)	OS7800-CB-D	18-slot chassis, 1 x OS7800-CMM, 2 x PSU DC, fan tray
OS7800 Redundant unit	OS7800-RCB-A	18-slot chassis, 2 x OS7800-CMM, 3 x PSU AC, fan tray
OS7800 Redundant unit (DC version)	OS7800-RCB-D	18-slot chassis, 2 x OS7800-CMM, 3 x PSU DC, fan tray
OS7800 Redundant Upgrade	OS7800-RP-A	1 x OS7800-CMM and 1 x PSU AC
OS7800 Redundant Upgrade (DC version)	OS7800-RP-D	1 x OS7800-CMM and 1 x PSU DC
<b>MODULES</b>		
OS7000 2-port 1000Base-X *	OS7-GNI2-U2	Requires GBIC (SC) transceiver
OS7000 12-port 1000Base-X *	OS7-GNI2-U12	Requires MiniGBIC (SFP) transceiver
OS7000 12-port 10/100/1000BaseTx	OS7-GNI2-C12	RJ-45
OS7000 24-port 10/100BaseTx	OS7-ENI2-C24	RJ-45
OS7000 24-port 10/100BaseTx PoE **	OS7-ENI-P24	RJ-45, IEEE 802.3af PoE
OS7000 12-port 100BaseFx	OS7-ENI-FM12	MT-RJ
OS7000 4-port OC-3 ATM*	OS7-ANI3-U4	SFP (requires OS7-CMM128-FMU)
OS7000 1-port OC-12 ATM*	OS7-ANI12-U1	SFP (requires OS7-CMM128-FMU)
<b>TRANSCEIVERS</b>		
GBIC-C transceiver	GBIC-C	1000BaseTx, RJ-45
GBIC-SX transceiver	GBIC-SX	1000Base-SX, SC
GBIC-LX transceiver	GBIC-LX	1000Base-LX, SC
GBIC-LH transceiver	GBIC-LH-70	1000Base-LH, SC

\* GBIC/SFP transceivers sold separately

\*\* Power over Ethernet power supply shelf

Product	Part No.	Notes
<b>TRANSCEIVERS (cont.'d)</b>		
GBIC-C transceiver	GBIC-C	1000BaseTx, RJ-45
GBIC-SX transceiver	GBIC-SX	1000Base-SX, SC
GBIC-LX transceiver	GBIC-LX	1000Base-LX, SC
GBIC-LH transceiver	GBIC-LH-70	1000Base-LH, SC
1000Base-SX transceiver	SFP-GIG-SX	Multi mode over 850nm wavelength, up to 300m
1000Base-SX extended transceiver	SFP-GIG-EXTND	Multi mode over 850nm wavelength, up to 2km
1000Base-LX transceiver	SFP-GIG-LX	Single mode over 1310nm wavelength, up to 10km
1000Base-LH transceiver	SFP-GIG-LH40	Single mode over 1310nm wavelength, up to 40km
1000Base-LH transceiver	SFP-GIG-LH70	Single mode over 1550nm wavelength, up to 70km
CWDM transceiver - 1470nm	SFP-GIG-47CWD60	Single mode fiber over 1470nm wavelength, LC connector
CWDM transceiver - 1490nm	SFP-GIG-49CWD60	Single mode fiber over 1490nm wavelength, LC connector
CWDM transceiver - 1510nm	SFP-GIG-51CWD60	Single mode fiber over 1510nm wavelength, LC connector
CWDM transceiver - 1530nm	SFP-GIG-53CWD60	Single mode fiber over 1530nm wavelength, LC connector
CWDM transceiver - 1550nm	SFP-GIG-55CWD60	Single mode fiber over 1550nm wavelength, LC connector
CWDM transceiver - 1570nm	SFP-GIG-57CWD60	Single mode fiber over 1570nm wavelength, LC connector
CWDM transceiver - 1590nm	SFP-GIG-59CWD60	Single mode fiber over 1590nm wavelength, LC connector
CWDM transceiver - 1610nm	SFP-GIG-61CWD60	Single mode fiber over 1610nm wavelength, LC connector
OC-3 ATM transceiver - IR	OC3-SFP-IR	ATM-155Mbps SFP, single mode fiber up to 10km
OC-3 ATM transceiver - SR	OC3-SFP-LR1	ATM-155Mbps SFP, single mode fiber up to 40km
OC-12 ATM transceiver - SR	OC12-SFP-SR	ATM-622Mbps SFP, multi mode fiber up to 500m
OC-12 ATM transceiver - IR	OC12-SFP-IR	ATM-622Mbps SFP, single mode fiber up to 10km
OC-12 ATM transceiver - LR	OC12-SFP-LR1	ATM-622Mbps SFP, single mode fiber up to 40km
<b>SOFTWARE</b>		
Advanced Routing services	OS7-SW-AR	Per CMM
Advanced Security services	OS7-SW-AS	Per CMM
Advanced Security services with Authentication server	OS7-SW-AS-SBR-N	Microsoft platform
Advanced Security services with Authentication server	OS7-SW-AS-SBR-S	Sun Solaris platform

\* GBIC/SFP transceivers sold separately

\*\* Power over Ethernet power supply shelf



Product	Part No.	Notes
<b>POWER SUPPLIES &amp; SPARES</b>		
<b>OS7700 Chassis Management Module</b>	OS7700-CMM128	CMM for OS-7700
<b>OS7800 Chassis Management Module</b>	OS7800-CMM128	CMM for OS-7800
<b>OS7000 CMM128 upgrade</b>	OS7-CMM128-FMU	Upgrade to CMM128 (For ATM modules)
<b>OS7000 Power supply unit</b>	OS7-PS-0600A	600 Watt PSU AC for OS-7000
<b>OS7000 Power supply unit (DC version)</b>	OS7-PS-0600D	600 Watt PSU DC for OS-7000
<b>OS7000 PoE Power shelf **</b>	OS7-IP-SHELF	External PoE rack for the OS7000 chassis. Rack to include 1 PSU
<b>OS7000 PoE power supply unit</b>	OS7-IPS-600A	600 watt PoE PSU for usage on OS7-IP-SHELF only
<b>OS7000 Chassis Fan Assembly</b>	OS7000-FTTC	Fan Assembly for OS-7000 chassis

\* GBIC/SFP transceivers sold separately

\*\* Power over Ethernet power supply shelf

# OmniSwitch 6850 Stackable LAN Switch

The Alcatel-Lucent OmniSwitch 6850 (OS6850) series is a line of L3 Gigabit Ethernet, power over Ethernet (PoE) capable fixed configuration switches. The OS6850s excel at the edge where they deliver line-rate gigabit switching and routing performance along with extensive network security features, enabling corporations to realize the full potential of secured networks. They are advanced stackable switches that perform wire-rate layer-2 switching and layer-3 routing for both IPv4 and IPv6 natively, with optimal quality of service (QoS) for mission critical applications. Native IPv6, advanced QoS, security, and network management, along with a lifetime warranty provide premium performance in the enterprise today while protecting customers' long-term capital interests, making this switch the best value in the industry.

- Carrier-class architecture
- Enterprise workgroups / LAN wiring closets
- Edge deployments and branch offices
- L3 aggregation / distribution layer switches in three-tier networks
- Small enterprise core switching
- Quality of service (QoS) for mission critical applications
- Data center server clusters

- Wide variety of features such as port density, port type, uplink type, and power
- High performance, affordable, available, future proof network
- Enhanced security that is adaptive to user mobility, has admission controls (NAC) and intrusion containment at the edge, core, and throughout the network
- Simplified manageability
- IPv6 support, a requirement of various corporate and governments
- Future proof – triple speed upgradeable to 10Gig
- Ideal for converged networks



Product	Part No.	Notes
<b>ADVANCED STACKABLE GIGABIT SWITCH</b>		<b>Stackable L3+ Switch</b>
<b>NON-POE MODELS</b>		
<b>OS6850-24</b>	OS6850-24	20-ports 10/100/1000BaseTx, 2 stack ports, 4 SFP combo ports, AC power supply
<b>OS6850-24D</b>	OS6850-24D	20-ports 10/100/1000BaseTx, 2 stack ports, 4 SFP combo ports, DC power supply
<b>OS6850-24X</b>	OS6850-24X	20-ports 10/100/1000BaseTx, 2 stack ports, 4 SFP combo ports, 2 10GE XFP ports, AC power supply
<b>OS6850-24XD ( 120W DC PS)</b>	OS6850-24XD	20-ports 10/100/1000BaseTx, 2 stack ports, 4 SFP combo ports, 2 10GE XFP ports, DC power supply
<b>OS6850-48 (126W AC PS)</b>	OS6850-48	44-ports 10/100/1000BaseTx, 2 stack ports, 4 SFP combo ports,
<b>OS6850-48D ( 120W DC PS)</b>	OS6850-48D	44-ports 10/100/1000BaseTx, 2 stack ports, 4 SFP combo ports,
<b>OS6850-48X (126W AC PS)</b>	OS6850-48X	44-ports 10/100/1000BaseTx, 2 stack ports, 4 SFP combo ports, 2 10GE XFP ports
<b>OS6850-48XD ( 120W DC PS)</b>	OS6850-48XD	44-ports 10/100/1000BaseTx, 2 stack ports, 4 SFP combo ports, 2 10GE XFP ports
<b>OS6850-U24X (126W AC PS)</b>	OS6850-U24X	22-ports SFP, 2 stacking ports, 2 SFP combo ports, 2 10GE XFP ports
<b>OS6850-U24XD (120W DC PS)</b>	OS6850-U24XD	22-ports SFP, 2 stacking ports, 2 SFP combo ports, 2 10GE XFP ports
<b>POE MODELS</b>		
<b>OS6850-P24 (360W PS)</b>	OS6850-P24	20-ports 10/100/1000BaseTx PoE, 2 stack ports, 4 SFP combo ports, 360W power supply
<b>OS6850-P24H (510W PS)</b>	OS6850-P24H	20-ports 10/100/1000BaseTx PoE, 2 stack ports, 4 SFP combo ports, 510W power supply
<b>OS6850-P24X (360W PS)</b>	OS6850-P24X	20-ports 10/100/1000BaseTx PoE, 2 stack ports, 4 SFP combo ports, 2 10GE XFP ports, 360W power supply
<b>OS6850-P24XH (510W PS)</b>	OS6850-P24XH	20-ports 10/100/1000BaseTx PoE, 2 stack ports, 4 SFP combo ports, 2 10GE XFP ports, 510W power supply
<b>OS6850-P48 (360W PS)</b>	OS6850-P48	44-ports 10/100/1000BaseTx PoE, 2 stack ports, 4 SFP combo ports
<b>OS6850-P48H (510W PS)</b>	OS6850-P48H	44-ports 10/100/1000BaseTx PoE, 2 stack ports, 4 SFP combo ports
<b>OS6850-P48X (360W PS)</b>	OS6850-P48X	44-ports 10/100/1000BaseTx PoE, 2 stack ports, 4 SFP combo ports, 2 10GE XFP ports
<b>OS6850-P48XH (510W PS)</b>	OS6850-P48XH	44-ports 10/100/1000BaseTx PoE, 2 stack ports, 4 SFP combo ports, 2 10GE XFP ports

\* SFP transceiver sold separately

Product	Part No.	Notes
<b>ADVANCED STACKABLE GIGABIT SWITCH (cont.'d)</b>		
<b>OMNISWITCH 6850 LITE CHASSIS 10/100 UPGRADABLE TO GIGABIT USING SOFTWARE LICENCE KEY</b>		
<b>NON-POE MODELS</b>		
OS6850-24L (126W AC PS)	OS6850-24L	20-ports 10/100BaseTx, 2 stacking ports, 4 SFP combo ports**
OS6850-24LD (120W DC PS)	OS6850-24LD	20-ports 10/100BaseTx, 2 stacking ports, 4 SFP combo ports**
OS6850-48L (126W AC PS)	OS6850-48L	44-ports 10/100BaseTx, 2 stacking ports, 4 SFP combo ports**
OS6850-48LD (120W DC PS)	OS6850-48LD	44-ports 10/100BaseTx, 2 stacking ports, 4 SFP combo ports**
<b>POE MODELS</b>		
OS6850-P24L (360W PS)	OS6850-P24L	20-ports 10/100BaseTx PoE, 2 stacking ports, 4 SFP combo ports**
OS6850-P24LH (510W PS)	OS6850-P24LH	20-ports 10/100BaseTx PoE, 2 stacking ports, 4 SFP combo ports**
OS6850-P48L (360W PS)	OS6850-P48L	44-ports 10/100BaseTx PoE, 2 stacking ports, 4 SFP combo ports**
OS6850-P48LH (510W PS)	OS6850-P48LH	44-ports 10/100BaseTx PoE, 2 stacking ports, 4 SFP combo ports**
<b>UPLINK MODULES / STACKING KITS</b>		
OS6850 Stacking cable	OS6850-CBL-30	30cm stacking cable
OS6850 Stacking cable - 60cm	OS6850-CBL-60	60cm stacking cable
OS6850 Stacking cable - 150cm	OS6850-CBL-150	150cm stacking cable
<b>TRANSCEIVERS</b>		
100BaseFX transceiver	SFP-100-LC-MM	Multi mode fiber, up to 500m, LC connector
100BaseFX transceiver	SFP-100-LC-SM15	Single mode fiber, up to 15km, LC connector
100BaseFX transceiver	SFP-100-LC-SM40	Single mode, up to 40km, LC connector
100BaseFX Bi-directional transceiver	SFP-100-BX20LT	Single mode, up to 20km (central office), tx-1550nm, rx- 1310nm
100BaseFX Bi-directional transceiver	SFP-100-BX20NU	Single mode, up to 20 km (client), tx-1310nm, rx-1550nm
Dual Speed transceiver	SFP-DUAL-MM	Multi mode SFP, 100Base-FX or 1000Base-LX

\* SFP transceiver sold separately

\*\* Upgradable to Gigabit

Product	Part No.	Notes
<b>TRANSCEIVERS (cont.'d)</b>		
Dual Speed transceiver	SFP-DUAL-SM10	Single mode SFP, 100Base-FX or 1000Base-LX
1000Base-SX transceiver	SFP-GIG-SX	Multi mode over 850nm wavelength, up to 300m
1000Base-SX extended transceiver	SFP-GIG-EXTND	Multi mode over 850nm wavelength, up to 2km
1000Base-LX transceiver	SFP-GIG-LX	Single mode over 1310nm wavelength, up to 10km
1000Base-LH transceiver	SFP-GIG-LH40	Single mode over 1310nm wavelength, up to 40km
1000Base-LH transceiver	SFP-GIG-LH70	Single mode over 1550nm wavelength, up to 70km
1000Base-T transceiver	SFP-GIG-T	Gigabit copper SFP, supports Cat 5, 5E, 6 cables, up to 100m.
CWDM transceiver - 1470nm	SFP-GIG-47CWD60	Single mode fiber over 1470nm wavelength, LC connector
CWDM transceiver - 1490nm	SFP-GIG-49CWD60	Single mode fiber over 1490nm wavelength, LC connector
CWDM transceiver - 1510nm	SFP-GIG-51CWD60	Single mode fiber over 1510nm wavelength, LC connector
CWDM transceiver - 1530nm	SFP-GIG-53CWD60	Single mode fiber over 1530nm wavelength, LC connector
CWDM transceiver - 1550nm	SFP-GIG-55CWD60	Single mode fiber over 1550nm wavelength, LC connector
CWDM transceiver - 1570nm	SFP-GIG-57CWD60	Single mode fiber over 1570nm wavelength, LC connector
CWDM transceiver - 1590nm	SFP-GIG-59CWD60	Single mode fiber over 1590nm wavelength, LC connector
CWDM transceiver - 1610nm	SFP-GIG-61CWD60	Single mode fiber over 1610nm wavelength, LC connector
10GE SR optical transceiver	XFP-10GE-SR	Multi mode fiber XFP up to 300m
10GE LR optical transceiver	XFP-10GE-LR	Single mode fiber XFP up to 10km
10GE ER optical transceiver	XFP-10GE-ER40	Single mode fiber XFP up to 40km
10GE ZR optical transceiver	XFP-10GE-ZR80	Single mode fiber XFP up to 80km
<b>SOFTWARE</b>		
OS-6850 Lite software upgrade license	OS6850-24L-UPGD	Upgrade OS6850-24L to 10/100/1000BaseTx
OS-6850 Lite software upgrade license	OS6850-48L-UPGD	Upgrade OS6850-48L to 10/100/1000BaseTx
Advanced Routing services	OS6850-SW-AR	Includes support for: OSPF, BGP, PIM, and DVMRP
Advanced Security services with Authentication server	OS-SW-SBR-N	Microsoft platform
Advanced Security services with Authentication server	OS-SW-SBR-S	Sun Solaris platform
<b>POWER SUPPLIES &amp; SPARES</b>		
OS6850 Backup power supply unit	OS6850-BP	AC 126 W Backup Power Supply
OS6850 Backup power supply unit (DC version)	OS6850-BP-D	DC 120 W Backup Power Supply
OS6850 Backup power supply unit	OS6850-BP-P	Standard PoE 360W Power Supply
OS6850 Backup power supply unit	OS6850-BP-PH	High PoE 510W Power Supply
* SFP transceiver sold separately		

# OmniSwitch 6600 Stackable LAN Switch

OmniSwitch 6600 family switches are advanced 10/100 based stackable layer 3 workgroup switches that provide wire rate L2+ switching, L3 routing and advanced services with high availability for IP communications and mission-critical environments. A compact form factor, a rich set of features and a high availability design makes the OS6600 a great choice for the following applications:

- Carrier-class architecture
- Enterprise workgroups/LAN wiring closets
- Edge deployments and branch offices
- Converged voice and data environments
- Power over Ethernet
- 100BaseFX fiber to the desktop




Product	Part No.	Notes
<b>ADVANCED STACKABLE SWITCH</b>		
<b>Stackable L3+ Switch</b>		
OS6602-24	OS6602-24	24-ports 10/100BaseTx, 2 ports Gig SFP, 2 stack ports
OS6602-48	OS6602-48	48-ports 10/100BaseTx, 2 ports Gig SFP, 2 stack ports
<b>UPLINK MODULES / STACKING KITS</b>		
OS6602 Stacking cable	OS6600-CBL-30CM	30cm stacking cable
OS6602 Stacking cable - 1M	OS6600-CBL-1M	1m stacking cable
OS6602 Stacking cable - 3M	OS6600-CBL-3M	3m stacking cable
<b>TRANSCEIVERS - GIGABIT SFPs</b>		
1000Base-SX transceiver	SFP-GIG-SX	Multi mode over 850nm wavelength, up to 300m
1000Base-SX extended transceiver	SFP-GIG-EXTND	Multi mode over 850nm wavelength, up to 2km
1000Base-LX transceiver	SFP-GIG-LX	Single mode over 1310nm wavelength, up to 10km
1000Base-LH transceiver	SFP-GIG-LH40	Single mode over 1310nm wavelength, up to 40km
1000Base-LH transceiver	SFP-GIG-LH70	Single mode over 1550nm wavelength, up to 70km
1000Base-T transceiver	SFP-GIG-T	Gigabit copper SFP, supports Cat 5, 5E, 6 cables, up to 100m
CWDM transceiver - 1470nm	SFP-GIG-47CWD60	Single mode fiber over 1470nm wavelength, LC connector
CWDM transceiver - 1490nm	SFP-GIG-49CWD60	Single mode fiber over 1490nm wavelength, LC connector
CWDM transceiver - 1510nm	SFP-GIG-51CWD60	Single mode fiber over 1510nm wavelength, LC connector
CWDM transceiver - 1530nm	SFP-GIG-53CWD60	Single mode fiber over 1530nm wavelength, LC connector
CWDM transceiver - 1550nm	SFP-GIG-55CWD60	Single mode fiber over 1550nm wavelength, LC connector
CWDM transceiver - 1570nm	SFP-GIG-57CWD60	Single mode fiber over 1570nm wavelength, LC connector
CWDM transceiver - 1590nm	SFP-GIG-59CWD60	Single mode fiber over 1590nm wavelength, LC connector
CWDM transceiver - 1610nm	SFP-GIG-61CWD60	Single mode fiber over 1610nm wavelength, LC connector
<b>SOFTWARE</b>		
Advanced Routing services	OS6000-SW-AR	Per switch
Advanced Security services	OS6000-SW-AS	Per switch
Advanced Security services with Authentication server	OS6000-SW-SBR-N	Microsoft platform
Advanced Security services with Authentication server	OS6000-SW-SBR-S	Sun Solaris platform
<b>POWER SUPPLIES &amp; SPARES</b>		
OS6602 Redundant power supply	OS6602-BPS	Redundant PSU AC for OS6602
OS6602 Redundant power supply (DC version)	OS6602-BPS-DC	Redundant PSU DC for OS6602


\* SFP transceiver sold separately

\*\* Power over Ethernet power supply shelf

# OmniStack 6200 Stackable LAN Switch



The OmniStack 6200 (OS 6200) family of stackable LAN switches were designed to meet 21st century networking needs. They are fixed configuration, 10/100 switches with up to 4 Gigabit uplinks that deliver the advanced features and services required today. These Fast Ethernet switches provide the same advanced services previously available only in Gigabit to the desktop class of switches, making them a great, inexpensive alternative to Gigabit. A compact, one unit (1U) high form factor, all in one stackable design and a comprehensive set of features makes the OS 6200 perfect for the following applications:

- Advanced stackable switch
  - Enterprise workgroups / LAN wiring closets
  - Edge deployments and branch offices
  - Ubiquitous power-over-Ethernet
  - Access devices for content rich Ethernet-based services to residential or business user
- 





Product	Part No.	Notes
<b>STACKABLE LAN SWITCH</b>		
<b>STACKABLE L2+ Fast Ethernet Switch</b>		
OS-LS-6212	OS-LS-6212	12-ports 10/100BaseTx, 2 x 10/100/1000BaseTx ports, 2 SFP combo ports
OS-LS-6212P	OS-LS-6212P	12-ports 10/100BaseTx PoE, 2 x 10/100/1000BaseTx ports, 2 SFP combo ports
OS-LS-6224	OS-LS-6224	24-ports 10/100BaseTx, 2 x 10/100/1000BaseTx ports, 2 SFP combo ports
OS-LS-6224P	OS-LS-6224P	24-ports 10/100BaseTx PoE, 2 x 10/100/1000BaseTx ports, 2 SFP combo ports
OS-LS-6248	OS-LS-6248	48-ports 10/100BaseTx, 2 x 10/100/1000BaseTx ports, 2 SFP combo ports
OS-LS-6248P	OS-LS-6248P	48-ports 10/100BaseTx PoE, 2 x 10/100/1000BaseTx ports, 2 SFP combo ports
OS-LS-6224U	OS-LS-6224U	24-ports 100Base SFP, 2 x 10/100/1000BaseTx ports, 2 SFP combo ports
<b>GBIC TRANCEIVERS</b>		
100BaseFX transceiver	SFP-100-LC-MM	Multi mode fiber, up to 500m, LC connector
100BaseFX transceiver	SFP-100-LC-SM15	Single mode fiber, up to 15km, LC connector
100BaseFX transceiver	SFP-100-LC-SM40	Single mode, up to 40km, LC connector
100BaseFX Bi-directional transceiver	SFP-100-BX20LT	Single mode, up to 20km (central office), tx-1550nm, rx- 1310nm
100BaseFX Bi-directional transceiver	SFP-100-BX20NU	Single mode, up to 20 km (client), tx-1310nm , rx-1550nm
1000Base-SX transceiver	SFP-GIG-SX	Multi mode over 850nm wavelength, up to 300m
1000Base-SX extended transceiver	SFP-GIG-EXTND	Multi mode over 850nm wavelength, up to 2km
1000Base-LX transceiver	SFP-GIG-LX	Single mode over 1310nm wavelength, up to 10km
1000Base-LH transceiver	SFP-GIG-LH40	Single mode over 1310nm wavelength, up to 40km
1000Base-LH transceiver	SFP-GIG-LH70	Single mode over 1550nm wavelength, up to 70km
<b>POWER SUPPLY</b>		
OS6200 Redundant power supply unit	OS-LS-62BP	Redundant PSU AC for OS-LS-6200
OS6200 Redundant PoE power supply unit	OS-LS-62BP-P	Redundant PSU AC for OS-LS-6200, PoE support
OS6200 Redundant power supply (DC version)	OS-LS-62BP-DC	Redundant PSU DC unit for OS-LS-6200

\* SFP transceiver sold separately

\*\* Power over Ethernet power supply shelf

# OmniAccess 6000 WLAN Switch

The Alcatel-Lucent OmniAccess Wireless product family is a new approach to scaling, securing, and managing 802.11 networks for enterprises implementing business-critical applications over wireless networks. For headquarters or campuses, the OmniAccess 6000 WLAN switch delivers high-performance wireless LAN with dynamic radio frequency (RF) management and advanced services such as application-aware security, wireless intrusion protection, seamless user mobility, location tracking and converged application support.

Next generation wireless solutions with support for high availability, security, mobility and managability

- Policy-based network access control
- Universal authentication
- Adaptive radio management
- Rogue and interfering access point detection
- Wireless intrusion protection
- Data encryption
- Network security
- Availability



- Seamless user mobility
- Centralized management
- Seamless wired/wireless integration
- Endpoint integrity
- Optimized infrastructure for voice / converged solutions
- Integrated location-based services and notification servers

Product	Part No.	Notes
<b>CHASSIS</b>		
<b>Modular Wireless switch (non-PoE configuration)</b>	OAW-6000-PS2	4-slot chassis, 2 x 200Watts power supply units
<b>Modular Wireless switch (PoE configuration)</b>	OAW-6000-PS4	4-slot chassis, 2 x 400Watts power supply units
<b>MODULES</b>		
<b>OAW-6000 Supervisor I (48 APs)</b>	OAW-SC-1-48	OAW-6000 can support 2 Supervisor modules
<b>OAW-6000 Supervisor I (128 APs)</b>	OAW-SC-1-128	OAW-6000 can support 2 Supervisor modules
<b>OAW-6000 Supervisor II (256 APs)</b>	OAW-SC-2-256	OAW-6000 can support 2 Supervisor modules
<b>OAW-6000 2-GE Line card *</b>	OAW-LC-2G	2 GBIC ports
<b>OAW-6000 2-GE24F Line card *</b>	OAW-LC-2G24F	2 GBIC ports, 24-ports 10/100BaseTx
<b>OAW-6000 2-GE24FP Line card *</b>	OAW-LC-2G24FP	2 GBIC ports, 24-ports 10/100BaseTx PoE
<b>GBIC TRANCEIVERS</b>		
<b>GBIC transceiver</b>	OAW-GBIC-T	1000BaseTx
<b>GBIC transceiver</b>	OAW-GBIC-SX	1000Base-SX
<b>GBIC transceiver</b>	OAW-GBIC-LX	1000Base-LX
<b>SOFTWARE</b>		
<b>Policy Enforcement Firewall Module</b>	OAW-SC1-48-PEF	For Supervisor Card 1-48, 48 AP License
<b>VPN Server Module</b>	OAW-SC1-48-VPN	For Supervisor Card 1-48, 48 AP License
<b>Wireless Intrusion Protection Module</b>	OAW-SC1-48-WIP	For Supervisor Card 1-48, 4P License
<b>Advanced AAA Module</b>	OAW-SC1-48-AAA	For Supervisor Card 1-48, 48 AP License
<b>External Services Interface Module</b>	OAW-SC1-48-ESI	For Supervisor Card 1-48, 48 AP License

\* GBIC transceiver sold separately

Product	Part No.	Notes
<b>SOFTWARE, cont.</b>		
xSec Module	OAW-SC1-48-XSC	For Supervisor Card 1-48, 48 AP License
Policy Enforcement Firewall Module	OAW-SC1-PEF	For Supervisor Card 1-128, 128 AP License
VPN Server Module	OAW-SC1-VPN	For Supervisor Card 1-128, 128 AP License
Wireless Intrusion Protection Module	OAW-SC1-WIP	For Supervisor Card 1-128, 128 AP License
Advanced AAA Module	OAW-SC1-AAA	For Supervisor Card 1-128, 128 AP License
External Services Interface Module	OAW-SC1-ESI	For Supervisor Card 1-128, 128 AP License
xSec Module	OAW-SC1-XSC	For Supervisor Card 1-128, 128 AP License
Policy Enforcement Firewall Module	OAW-SC2-PEF	For Supervisor Card 2-256, 256 AP License
VPN Server Module	OAW-SC2-VPN	For Supervisor Card 2-256, 256 AP License
Wireless Intrusion Protection Module	OAW-SC2-WIP	For Supervisor Card 2-256, 256 AP License
Advanced AAA Module	OAW-SC2-AAA	For Supervisor Card 2-256, 256 AP License
External Services Interface Module	OAW-SC2-ESI	For Supervisor Card 2-256, 256 AP License
xSec Module	OAW-SC2-XSC	For Supervisor Card 2-256, 256 AP License
OAW-SC-1-48 upgrade to OAW-SC-1-128	OAW-SC1-48-128U	Upgrade 48 to 128 Base software
Policy Enforcement Firewall Module (Upgrade)	OAW-SC1-PEF-UG1	Upgrade 48 to 128 AP License
VPN Server Module (Upgrade)	OAW-SC1-VPN-UG1	Upgrade 48 to 128 AP License
Wireless Intrusion Protection Module (Upgrade)	OAW-SC1-WIP-UG1	Upgrade 48 to 128 AP License
Advanced AAA Module (Upgrade)	OAW-SC1-AAA-UG1	Upgrade 48 to 128 AP License
External Services Interface Module (Upgrade)	OAW-SC1-ESI-UG1	Upgrade 48 to 128 AP License
xSec Module (Upgrade)	OAW-SC1-XSC-UG1	Upgrade 48 to 128 AP License
<b>POWER SUPPLY &amp; SPARES</b>		
OAW-6000 Base 4-Slot Chassis	OAW-6000-CHAS	Exclude fan tray
OAW-6000 Power Supply - 200 Watt	OAW-6000-PS200	200 Watt PSU AC
OAW-6000 Power Supply - 400 Watt	OAW-6000-PS400	400 Watt PSU AC
OAW-6000 Replacement Fan Tray	OAW-6000-FT	Fan tray
OAW-6000 Supervisor / Line Card Slot Blank Panel	OAW-6000-SLBLK	
OAW-6000 Power Supply Unit Slot Blank Panel	OAW-6000-PSBLK	

# OmniAccess 4000 WLAN Switch

The Alcatel-Lucent OmniAccess 4000 family is a new approach to building, securing, and managing 802.11 networks for enterprises implementing business-critical applications over wireless networks. For regional headquarters or dense building deployments, the OmniAccess 4000 family delivers high performance wireless LANs with dynamic radio frequency (RF) management and advanced services such as application-aware security, wireless intrusion protection, seamless user mobility, location tracking and bandwidth management.

- Seamless user mobility
- Centralized management
- Seamless wired-wireless integration
- Endpoint integrity
- Optimized infrastructure for voice / converged solutions
- Integrated location-based services and notification servers

- Policy-based network access control
- Universal authentication
- Adaptive radio management
- Rogue and interfering access points detection
- Wireless intrusion protection
- Data encryption
- Network security
- Availability



Product	Part No.	Notes
<b>CHASSIS</b>		
2-port Wireless Switch	OAW-4302	1-port 10/100BaseTx (uplink), 1-port 10/100/1000BaseTx, support up to 6 APs
4-port Wireless Switch	OAW-4304T	8-ports 10/100BaseTx PoE, 1-port 10/100/1000BaseTx, support up to 4 APs
4-port Wireless Switch	OAW-4304SX	8-ports 10/100BaseTx PoE, 1-port 1000BaseSX, support up to 4 APs
8-port Wireless Switch	OAW-4308T	8-ports 10/100BaseTx PoE, 1-port 10/100/1000BaseTx, support up to 16 APs
8-port Wireless Switch	OAW-4308SX	8-ports 10/100BaseTx PoE, 1-port 1000BaseSX, support up to 16 APs
24-port Wireless Switch	OAW-4324	24-ports 10/100BaseTx PoE, 2-ports GBIC, support up to 48 APs
<b>TRANSCEIVERS</b>		
GBIC transceiver	OAW-GBIC-T	1000BaseTx
GBIC transceiver	OAW-GBIC-SX	1000Base-SX
GBIC transceiver	OAW-GBIC-LX	1000Base-LX
<b>ACCESS POINTS &amp; LICENSES</b>		
Remote Access Point Software Module	OAW-AP-RAP1	1 Remote AP License
Remote Access Point Software Module	OAW-AP-RAP4	4 Remote AP Licenses
Remote Access Point Software Module	OAW-AP-RAP6	6 Remote AP Licenses
Remote Access Point Software Module	OAW-AP-RAP8	8 Remote AP Licenses
Remote Access Point Software Module	OAW-AP-RAP16	16 Remote AP Licenses
Remote Access Point Software Module	OAW-AP-RAP24	24 Remote AP Licenses
Remote Access Point Software Module	OAW-AP-RAP48	48 Remote AP Licenses
Remote Access Point Software Module	OAW-AP-RAP64	64 Remote AP Licenses
Remote Access Point Software Module	OAW-AP-RAP128	128 Remote AP Licenses
Remote Access Point Software Module	OAW-AP-RAP256	256 Remote AP Licenses



Product	Part No.	Notes
<b>SOFTWARE</b>		
OAW-4302 Policy Enforcement Firewall Module	OAW-4302-PEF	6 AP Licenses
OAW-4302 VPN Server Module	OAW-4302-VPN	6 AP Licenses
OAW-4302 Wireless Intrusion Protection Module	OAW-4302-WIP	6 AP Licenses
OAW-4302 Advanced AAA Module	OAW-4302-AAA	6 AP Licenses
OAW-4302 External Services Interface Module	OAW-4302-ESI	6 AP Licenses
OAW-4302 xSec Module	OAW-4302-XSC	6 AP Licenses
OAW-4304 Policy Enforcement Firewall Module	OAW-4304-PEF	4 AP Licenses
OAW-4304 VPN Server Module	OAW-4304-VPN	4 AP Licenses
OAW-4304 Wireless Intrusion Protection Module	OAW-4304-WIP	4 AP Licenses
OAW-4304 Advanced AAA Module	OAW-4304-AAA	4 AP Licenses
OAW-4304 External Services Interface Module	OAW-4304-ESI	4 AP Licenses
OAW-4304 xSec Module	OAW-4304-XSC	4 AP Licenses
OAW-4304 upgrade to OAW-4308	OAW-4304-4308-U	Upgrade 4 to 16 Base software
OAW-4308 Policy Enforcement Firewall Module (Upgrade)	OAW-4304-PEF-U	Upgrade 4 to 16 AP Licenses
OAW-4308 VPN Server Module (Upgrade)	OAW-4304-VPN-U	Upgrade 4 to 16 AP Licenses
OAW-4308 Wireless Intrusion Protection Module (Upgrade)	OAW-4304-WIP-U	Upgrade 4 to 16 AP Licenses
OAW-4308 Advanced AAA Module (Upgrade)	OAW-4304-AAA-U	Upgrade 4 to 16 AP Licenses
OAW-4308 External Services Interface Module (Upgrade)	OAW-4304-ESI-U	Upgrade 4 to 16 AP Licenses
OAW-4308 xSec Module (Upgrade)	OAW-4304-XSC-U	Upgrade 4 to 16 AP Licenses
OAW-4308 Policy Enforcement Firewall Module	OAW-4308-PEF	16 AP Licenses
OAW-4308 VPN Server Module	OAW-4308-VPN	16 AP Licenses
OAW-4308 Wireless Intrusion Protection Module	OAW-4308-WIP	16 AP Licenses
OAW-4308 Advanced AAA Module	OAW-4308-AAA	16 AP Licenses
OAW-4308 External Services Interface Module	OAW-4308-ESI	16 AP Licenses
OAW-4308 xSec Module	OAW-4308-XSC	16 AP Licenses
OAW-4324 Policy Enforcement Firewall Module	OAW-4324-PEF	48 AP Licenses
OAW-4324 VPN Server Module	OAW-4324-VPN	48 AP Licenses
OAW-4324 Wireless Intrusion Protection Module	OAW-4324-WIP	48 AP Licenses
OAW-4324 Advanced AAA Module	OAW-4324-AAA	48 AP Licenses
OAW-4324 External Services Interface Module	OAW-4324-ESI	48 AP Licenses
OAW-4324 xSec Module	OAW-4324-XSC	48 AP Licenses



# OmniAccess WLAN Access Points OmniVista Mobility Manager

The Alcatel-Lucent OmniAccess family of next generation, multi-purpose access points (APs) is designed to meet the needs of any enterprise wireless LAN (WLAN) deployment.

The Alcatel-Lucent OmniAccess APs include single and dual-radio 802.11a/b/g models with a variety of fixed and detachable antenna options.

- AP41: Remote AP for home office/ low-cost deployments
- AP60 & AP61: Indoor enterprise deployments with single radio usage requirements
- AP65: Indoor enterprise deployments with aesthetic/discreetness requirements with multi-radios
- AP70: Indoor enterprise deployments with flexibility and multi-radio usage requirements
- AP80: Harsh outdoor or industrial environments

The Alcatel-Lucent OmniVista Mobility Manager provides a comprehensive suite of applications for planning, monitoring, fault management, reporting, RF coverage and location visualization for the OmniAccess wireless enterprise network. It is tightly integrated with other OmniAccess wireless system components such as wireless LAN switches and controlled access points.

- User-centric data model
- Auto discovery
- User configurable reports
- Versatile scheduling engine
- Powerful visualization
- Location API
- Saved searches
- Java Webstart UI





Product	Part No.	Notes
<b>SOFTWARE</b>		
Remote Access Point Software Module	OAW-AP-RAP1	1 Remote AP License
Remote Access Point Software Module	OAW-AP-RAP4	4 Remote AP Licenses
Remote Access Point Software Module	OAW-AP-RAP6	6 Remote AP Licenses
Remote Access Point Software Module	OAW-AP-RAP8	8 Remote AP Licenses
Remote Access Point Software Module	OAW-AP-RAP16	16 Remote AP Licenses
Remote Access Point Software Module	OAW-AP-RAP24	24 Remote AP Licenses
Remote Access Point Software Module	OAW-AP-RAP48	48 Remote AP Licenses
Remote Access Point Software Module	OAW-AP-RAP64	64 Remote AP Licenses
Remote Access Point Software Module	OAW-AP-RAP128	128 Remote AP Licenses
Remote Access Point Software Module	OAW-AP-RAP256	256 Remote AP Licenses
<b>ACCESS POINTS &amp; LICENSES</b>		
AP41 Wireless Access Point	OAW-AP41 1-port	10/100BaseTx PoE, 802.11a or 802.11b/g
AP60 Wireless Access Point	OAW-AP60 1-port	10/100BaseTx PoE, External Dual RP-SMA 802.11a or 802.11b/g Antenna
AP61 Wireless Access Point	OAW-AP61 1-port	10/100BaseTx PoE, Integral Tri-band Antenna, 802.11a or 802.11b/g
AP65 Wireless Access Point	OAW-AP65 1-port	10/100BaseTx PoE, Integral Antenna, 802.11a & 802.11b/g
AP70 Wireless Access Point	OAW-AP70 2-ports	10/100BaseTx PoE, Integral Antenna & Quad RP-SMA External Antenna 802.11a & 802.11b/g
Outdoor Wireless Access Point	OAW-AP80M	OAW-AP80 Parent Dual-band Outdoor AP

Product	Part No.	Notes
<b>MOBILITY MANAGER</b>		
OmniVista Mobility Manager Appliance	OV-MM-APL	Dual Processor, RAID subsystem, dual power supply, 2GB RAM, 1U
OmniVista Mobility Manager Appliance Spares	OV-MM-APL-HD-S	OV-MM appliance Spare Hard Drive (200GB)
OmniVista Mobility Manager Appliance Spares	OV-MM-APL-PSU-S	OV-MM appliance Spare Power Supply (520W)
OmniVista Mobility Manager Software	OV-MM-SW	Software distribution disk, quick start installation guide, and user guide. Also includes a license certificate for 50 APs.
OmniVista Mobility Manager Optional Software Modules	OV-MM-CTX10	Mobility Management System Context License (10 Security Contexts)
OmniVista Mobility Manager Optional Software Modules	OV-MM-CTX50	Mobility Management System Context License (50 Security Contexts)
OmniVista Mobility Manager Expansion Licenses	OV-MM-100UG	OmniVista Mobility Manager Expansion License (100 AP). Each OV-MM-100UG license adds management support for 100 additional APs.
OmniVista Mobility Manager Expansion Licenses	OV-MM-APL-UL	Unlimited AP Expansion License for OmniVista Mobility Manager Appliance. The OV-MM-APL-UL license provides unlimited AP support on a single OmniVista Mobility Manager Appliance. Managed APs can be local or remote.
OmniVista Mobility Manager Expansion Licenses	OV-MM-SW-UL	Unlimited AP Expansion License for OmniVista Mobility Manager. The OV-MM-SW-UL license provides unlimited AP support on a single OmniVista Mobility Manager System. Managed APs can be local or remote.





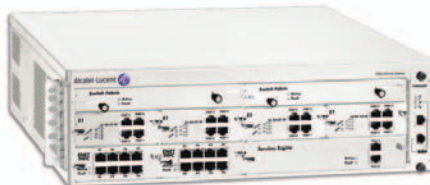
# OmniAccess 700

The Alcatel-Lucent OmniAccess 700 Unified Services Gateway family are multi-service networking devices designed to reduce the cost and complexity of managing enterprise and branch office networks. These gateways provide comprehensive remote management and unparalleled serviceability by unifying numerous hardware and software networking solutions and are ideal for deployment in the enterprise, and by carriers/managed service providers.

- Integrates multiple services onto one platform
- Embedded encryption accelerator and an integrated digital signal processor for voice call processing
- Choice of optional interfaces
- Remote management
- Modular software design – ModuLive
- OnePass approach
- LifeLine management framework

## Key selling points

- A single, highly available system for branch office networking
- Lower operating expenses (OpEx) by having a single platform that offers simplified services management
- Maintains scalability and performance as multiple services are added
- Alcatel-Lucent ModuLive maximizes availability and reduces the time required to deploy services with zero disruption to other operating services
- Resilient, always available local system management access eliminating need for on-site intervention
- Departmental control of individual services



Product	Part No.	Notes
<b>CHASSIS</b>		
OmniAccess 740	OA740	1U 4 slot modular chassis with a high-speed switching backplane supporting 2 interface module slots, 1 service engine card (2 slot wide) with a 2Ghz CPU, 2 built-in GE uplink ports and AC power supply
OmniAccess 780	OA780	10 slot modular chassis with a high-speed switching backplane supporting 6 interface module slots, 1 service engine card (2 slots wide) with a 2Ghz CPU, 2 built-in GE uplink ports and AC power supply
<b>INTERFACE MODULES</b>		
Ethernet LAN module	OA7-GE-8	8-port 10/100/1000
USP module	OA7-USP-4	4-port (V.35/X.21)
T1/E1 module	OA7-T1E1-4	4-port
<b>INCLUDED SOFTWARE</b>		
VPN Services		VPN services software module for the OmniAccess 780 and OmniAccess 740 Unified Services Gateways
IDS/IPS Services		IIDS/IPS services software module for the OmniAccess 780 and 740 Unified Services Gateways

# VPN Firewall Brick

The Alcatel-Lucent VPN Firewall Brick portfolio offers a broad range of enterprise and carrier-class security solutions to protect corporate and service provider networks. The portfolio delivers mission-critical IP applications to headquarter employees, branch offices, trading partners, road warriors and customers.

The portfolio forms an unique three-tier security architecture and includes:

- Alcatel-Lucent VPN Firewall Brick Security Appliances – Security appliances that integrate application layer inspection, firewall functionality with advanced VPN capabilities for small-office through data-center requirements in support of securing traditional and next-generation converged IP networks.
- Alcatel-Lucent Security Management Server (SMS) – software for robust, tightly synchronized firewall, VPN, service quality, VLAN and virtual firewall policy management.
- Alcatel-Lucent IPSec Client – Software that provides secure remote access VPN services for mobile workforce and telecommuters.

Key selling points:

- Certified, virtually impenetrable end-to-end solution
- Secure, efficient centralized management
- Built-in next gen. network security capabilities
- Full redundancy with true failover VoIP protection
- Integrated bandwidth management/QoS
- Highly scalable VPN and firewall virtualization
- Generalized DoS protection with Day 0 mitigations
- Unique distributed threat management capabilities



Product	Part No.	Notes
<b>SECURITY APPLIANCES</b>		
VPN Firewall Brick 50	300819075	3 10/100 ports, Built-in VPN accelerator, External AC power supply*
VPN Firewall Brick 150	300788288	4 10/100 ports, Built-in VPN accelerator, External AC power supply*
VPN Firewall Brick 700 Basic	109625004	8 10/100/1000 ports, Internal AC power supply*
VPN Firewall Brick 700 VPN AC	109624981	8 10/100/1000 ports, VPN Accelerator Card, Internal AC power supply*
VPN Firewall Brick 700 VPN DC	109624999	8 10/100/1000 ports, VPN Accelerator Card, Internal DC power supply*
VPN Firewall Brick 1200 Basic	109625772	2 GigE SFP**, 8 10/100/1000 ports, VPN Accelerator Card, Dual Internal AC power supplies*
VPN Firewall Brick 1200 HS AC	109625780	6 GigE SFP**, 14 10/100/1000 ports, VPN Accelerator Card, Dual Internal AC power supplies*
VPN Firewall Brick 1200 HS DC	109625806	6 GigE SFP**, 14 10/100/1000 ports, VPN Accelerator Card, Dual Internal DC power supplies*

\* Requires purchase of power cord with each AC unit and at least one USB Thumb or Floppy Drive per installation

\*\* SFP transceiver sold separately.

<b>BUNDLED POWER CORDS</b>		
Power Cord – NA	300299690	North American Power Cord
Power Cord – UK/Ireland	300299724	UK and Ireland Power Cord
Power Cord – Europe	300299658	EU-European Power Cord
Power Cord – Italy	300299674	Italian Power Cord
Power Cord – Swiss	300299716	Swiss Power Cord
Power Cord – Denmark	300299633	Denmark Power Cord
Power Cord – Japan (3-prong)	409006814	Japanese 3-prong Power Cord
Power Cord – Japan (2-prong)	300299682	Japanese 2-prong Power Cord
Power Cord – Aus./N.Z.	300299617	Australia/New Zealand Power Cord
Power Cord – Israel	300299666	Israeli Power Cord
Power Cord – S.A./India	300299708	South African/Indian Power Cord
Power Cord – Argentina	300327889	Argentinean Power Cord

Product	Part No.	Notes
<b>INSTALLATION USB DEVICES</b>		
USB Floppy Drive	300767365	Floppy Drive for use in initial staging of Bricks (shareable)*
USB Thumb Drive	300803798	Thumb Drive for use in initial staging of Bricks (shareable)*
<b>TRANCEIVERS</b>		
Gigabit Copper Transceiver	300912540	1000 Base-T Copper SFP Transceiver
MMF Transceiver	300912557	1000-Base-SX MMF SFP Transceiver
SFP Transceiver	300912979	1000-Base-LX/LH SMF SFP Transceiver
<b>MANAGEMENT SOFTWARE</b>		
SMS v9.1 Primary	300903176	Management platform –supports management of 5 Bricks, 100 IPsec clients
SMS v9.1 Redundancy	300903184	Redundant Copy (up to 3 permitted per SMS primary)
SMS v9.1 Compute Server	300903192	Compute Server log collectors – up to 5 permitted per ALSMS primary or redundancy system
Radius Accounting License	300910650	Add-on license to provide RADIUS-based accounting capabilities for next-generation IKEv2 clients
Legal Intercept License	300932589	Add-on license to provide legal intercept capabilities for next-generation IKEv2 clients
5 Brick Growth Package	300903234	Add-on license to manage an additional 5 Bricks from SMS cluster
25 Brick Growth Package	300903242	A Add-on license to manage an additional 25 Bricks from SMS cluster
50 Brick Growth Package	300903259	Add-on license to manage an additional 50 Bricks from SMS cluster
100 Brick Growth Package	300903267	Add-on license to manage an additional 100 Bricks from SMS cluster
250 Brick Growth Package	300903275	Add-on license to manage an additional 250 Bricks from SMS cluster
500 Brick Growth Package	300903283	Add-on license to manage an additional 500 Bricks from SMS cluster
100 IPsec Client Growth Package	300903291	Add-on license to support an additional 100 simultaneously connected IPsec VPN clients

\* Requires purchase of power cord with each AC unit and at least one USB Thumb or Floppy Drive per installation

\*\* SFP transceiver sold separately.

Product	Part No.	Notes
<b>MANAGEMENT SOFTWARE (cont.'d)</b>		
<b>500 IPsec Client Growth Package</b>	300903309	Add-on license to support an additional 500 simultaneously connected IPsec VPN clients
<b>1000 IPsec Client Growth Package</b>	300903317	Add-on license to support an additional 1000 simultaneously connected IPsec VPN clients
<b>10000 IPsec Client Growth Package</b>	300903325	Add-on license to support an additional 10000 simultaneously connected IPsec VPN clients
<b>SOFTWARE UPGRADES</b>		
		Refer to the enterprise solutions price book for information
<b>SOFTWARE SUBSCRIPTIONS</b>		
		Refer to the enterprise solutions price book for information
<b>TECHNICAL SUPPORT SERVICES</b>		
		Refer to the enterprise solutions price book for information
<b>SPARE PARTS</b>		
		Refer to the enterprise solutions price book for information



\* Requires purchase of power cord with each AC unit and at least one USB Thumb or Floppy Drive per installation

\*\* SFP transceiver sold separately.



# OmniAccess Safeguard

The OmniAccess SafeGuard products – recent winner of Network World’s “Clear Choice” award for NAC deployment – deliver comprehensive LAN security through network-based high performance security appliances. This best of breed technology allows network administrators to radically reduce the risk of security breaches and ensure continuity of operations.

- Network admission control appliance for wire-line and wireless users
- Client-less host integrity check for wire-line and wireless users
- Per user statefull firewall
- Statistical anomaly detection and intrusion protection
- Per user layer-7 awareness and activity logging



Product	Part No.	Notes
<b>SECURITY APPLIANCE</b>		
OmniAccess 1000 SafeGuard	OAG-1000-R-A	4 data port pairs, 2 extensibility ports, supports 10 unpopulated Gigabit SFP cages
OmniAccess 2400 SafeGuard	OAG-2400-R-A	10 data port pairs, 4 extensibility ports, supports 24 unpopulated Gigabit SFP cages
<b>TRANSCIEVERS</b>		
1000Base-LX transceiver	OAG-SFP-GIG-LX	SFP MSA, supports single mode fiber
	OAG-SFP-GIG-SX	SFP MSA, supports multi mode fiber
	OAG-SFP-GIG-T	SFP MSA
<b>ACCESSORIES</b>		
Optional 512 Compact Flash	OAG-CF512A	For the OmniAccess SafeGuard platforms
OmniAccess SafeGuard platforms	OAG-RM	19" space rack mount brackets
<b>SOFTWARE</b>		
OmniVista SafeGuard Manager	OV-OAG-10-25-UG	Upgrade license from up to 10 to up to 25 platforms
OmniVista SafeGuard Manager	OV-OAG-10-50-UG	Upgrade license from up to 10 to up to 50 platforms
OmniVista SafeGuard Manager	OV-OAG-25-50-UG	Upgrade license from up to 25 to up to 50 platforms
OmniVista SafeGuard Manager	OV-OAG-5-10-UG	Upgrade license from up to 5 to up to 10 platforms
OmniVista SafeGuard Manager	OV-OAG-5-25-UG	Upgrade license from up to 5 to up to 25 platforms
OmniVista SafeGuard Manager	OV-OAG-5-50-UG	Upgrade license from up to 5 to up to 50 platforms
OmniVista SafeGuard Manager	OV-OAG-SW-10	License to manage up to 10 platforms
OmniVista SafeGuard Manager	OV-OAG-SW-25	License to manage up to 25 platforms
OmniVista SafeGuard Manager	OV-OAG-SW-5	License to manage up to 5 platforms
OmniVista SafeGuard Manager	OV-OAG-SW-50	License to manage up to 50 platforms

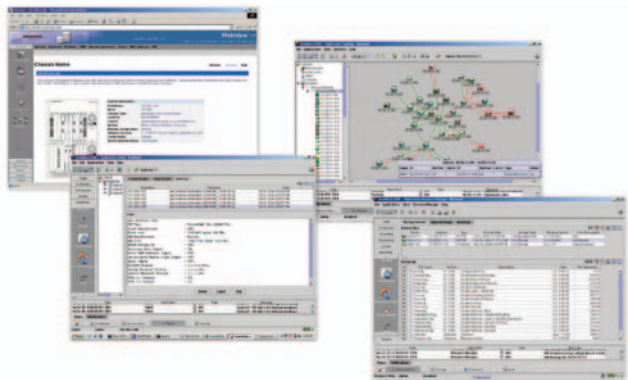


# OmniVista 2500 and 2700

## Network Management Systems

OmniVista 2500 and 2700 Network Management Systems form a comprehensive network management system of applications and tools that simplify the management of Alcatel-Lucent networking devices and third party IP devices. OmniVista NMS allows managers to monitor network activity, configure and troubleshoot each device, as well as manage an entire network from a single platform. OmniVista has a true client/server architecture allowing multiple users to access its services simultaneously. It delivers network level management while providing access to various element managers.

OmniVista NMS offers unified management, network-wide visibility, configuration, monitoring, policy-based management for QoS and network resources access, centralized network administration credentials, network quarantine services to prevent security breaches and northbound interface capabilities, all within a scalable architecture.



Product	Part No.	Notes
<b>NETWORK MANAGEMENT APPLICATION</b>		
<b>OmniVista 2500 &amp; 2700 NMS</b>	OV-NMS-CD	Contains all OmniVista 2500 Core & OmniVista 2700 optional applications
<b>OmniVista 2520 Limited Single-User license</b>	OV2520-LSU-R3	OmniVista 2520 Limited Single User application (limited to 15 devices support)
<b>OmniVista 2520 Basic Single-user license</b>	OV2520-BSU-R3	OmniVista 2520 Single User application
<b>OmniVista 2540 Basic Multi-user license</b>	OV2540-BMU-R3	OmniVista 2540 Multiple User application
<b>OmniVista 2730 PolicyView QoS license</b>	OV2730-PVOT-R3	OmniVista 2730 PolicyView application
<b>OmniVista 2750 SecureView – SA license</b>	OV2750-SVSA-R3	OmniVista 2750 SecureView Switch Access application
<b>OmniVista 2760 SecureView – ACL license</b>	OV2760-SVACL-R3	OmniVista 2760 SecureView ACL application
<b>OmniVista 2770 Quarantine Mgr license</b>	OV2770-QM-R3	OmniVista 2770 Quarantine Mgr application
<b>OmniVista 2790 Web Services license</b>	OV2790-WS-R3	OmniVista 2790 Web Services (API & Web Client) application

Note that all optional OmniVista 2700 applications require OmniVista 2500 series

UPGRADE LICENSES		LICENSE DESCRIPTION
<b>Upgrade license for OmniVista 2520 Basic Single User</b>	OV2520-UPG-R3	OV2520 Single User - License upgrade from any previous releases to release 3.4
<b>Upgrade license for OmniVista 2540 Basic Multi User</b>	OV2540-UPG-R3	OV2540 Multi User - License upgrade from any previous releases to release 3.4
<b>Upgrade license for OmniVista 2730 PolicyView</b>	OV2730-UPG-R3	OV2730 PolicyView - License upgrade from any previous releases to release 3.4
<b>Upgrade license for OmniVista 2750 SecureView- SA</b>	OV2750-UPG-R3	OV2750 SecureView SA - License upgrade any previous releases to release 3.4
<b>Upgrade license for OmniVista 2760 SecureView- ACL</b>	OV2760-UPG-R3	OV2760 SecureView ACL - License upgrade any previous releases to release 3.4
<b>Upgrade license for OmniVista 2770 Quarantine Manager</b>	OV2770-UPG-R3	OV2770 Quarantine Mgr - License upgrade from any previous releases to release 3.4
<b>Upgrade license for OmniVista 2790 Web Services</b>	OV2790-UPG-R3	OV2790 Web Services - License upgrade from any previous releases to release 3.4

EXTENSION LICENSES		LICENSE DESCRIPTION
<b>Extension license for OmniVista 2520 Limited Single User</b>	OV2520-EXT-R3	OmniVista 2520 Limited Single User - Extension license to OmniVista 2520 Basic Single User - Release 3.4
<b>Extension license for OmniVista 2520 Basic Single User</b>	OV2540-EXT-R3	OmniVista 2520 Basic Single User - Extension license to OmniVista 2540 Basic Multi User - Release 3.4

Availability Q4-2007 for Release 3.4

# VitalSuite

## Performance Management Software

VitalSuite is Alcatel-Lucent's industry leading, award winning, multi-vendor, multi-technology network, application and business transaction performance management product family. With its unprecedented "Quality of Visibility" (QoV), VitalSuite lets the customer see everything from the physical infrastructure to individual desktops to understand the end-user experience and monitor compliance with service level agreements (SLAs). It's a sophisticated information delivery system that maximizes the ROI of existing and evolving IT infrastructures. It allows IT shops to provide their customers (whether internal or external) with secure views into the quality of services they are receiving.

VitalSuite is a product that is very broad in applicability – organizations across all industries are targets for VitalSuite. Though organizations of any size can benefit from network and application performance monitoring, the need would be more pressing and ROI more compelling for organizations with 25 or more devices (switches, routers, hubs, etc.)



## VitalSuite • Performance Management Software

VitalSuite consists of the following product components:

- **VitalNet/Vital Real-time:** the industry's most complete network performance management solution, monitors routers, switches, servers and transport traffic with real-time advanced event analysis and path analysis. It provides unparalleled end-to-end, top-to-bottom visibility into network performance. VitalNet helps users benchmark network behavior, efficiently troubleshoot network problems and optimize the performance of the network devices.
- **VitalApps:** Client, network and server application monitoring with real-time application event management and help desk integration. It is specifically designed to provide aggregated views of application performance across the network and into and through the enterprise. It utilizes data gathered by VitalAgent software installed on individual PCs to monitor every transaction from the desktop, across local and remote links, through hubs, switches and routers to the destination server and back again. It delivers visibility into how users are experiencing application performance and availability.
- **VitalART:** Wizard-based, custom report generator Advanced Reporting Toolkit software. The flexible formatting power of VitalART software allows one to easily transform network performance data to dynamic, custom reports and quickly determine the status of the network infrastructure.

Key selling points:

- Increase quality of service by maximizing available bandwidth, manage time sensitive services and assuring QoS & SLA success
- Improve operational efficiency by maximize network availability, detect and sectionalize network troubles, centralize and consolidate operations, optimize staff and training
- Maximize revenue with improved service availability, reduced MTTR and deliver on SLA commitments



## VitalSuite Performance Management Server for Enterprises

## Comcodes

VitalSuite CD-ROM for Windows servers	300955374
VitalSuite CD-ROM for SUN Solaris platform	300955382
<b>VitalSuite APPS is not available on Unix.</b>	
VitalSuite Paperback documentation	300960747
VitalSuite base server with 1 RTU included for Windows servers	300960721
VitalSuite base server with 1 RTU included for SUN Solaris platform	300960739
<b>VitalSuite APPS is not available on Unix.</b>	
VitalSuite Additional 1 RTU <b>requires purchase of VitalSuite base server</b>	300955390
VitalSuite Additional 10 RTU <b>requires base server Windows or Solaris</b>	300955408
VitalSuite Additional 100 RTU <b>requires base server Windows or Solaris</b>	300955416

### OPTIONS

VitalSuite SIP VoIP agent stat (1 Agent) <b>VitalSuite base server required</b>	300955424
VitalSuite Cisco Netflow RMON * 1 interface <b>VitalSuite base server required</b>	300589165
VitalSuite ART for 1 server with 1 or 2 CPUs <b>VitalSuite base server required</b>	300955432
VitalSuite APPS Agent <b>– pack of 25 Windows Desktop Agents, pack of 5 Mid-Tier Agent or pack of 5 Automon or any other combination as long it is equal to a total of 25 agents using 5 to 1 ratio for Mid-Tier or Automon</b> <b>VitalSuite APPS requires a dedicated Windows server</b>	300955424

### VITALSUITE MISCELLANEOUS

VitalSuite ODBC Driver per additional Solaris Server	300957057
--	-----------

1 RTU = 1VoIP device (IP PBX, Mediagateway, Trunking gateway, VoIP Gateway), or

1 RTU = 10 switches or 10 routers or 10 servers or 1000 IP Phones

For Windows servers: PC hardware and Microsoft Windows, SQL servers need to be purchased separately

Solaris servers: SUN hardware and SUN Solaris plus Oracle need to be purchased separately

Technical support is calculated on the total amount of VitalSuite licenses. Yearly fee starting at ordering date.

# VitalQIP DNS/DHCP

## IP Management Software

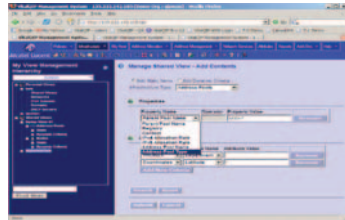
The VitalQIP DNS/DHCP IP Address Management Software is a market leading solution for automating IP address management services across networks. It streamlines management and cuts administrative costs for enterprises, government agencies, and service providers worldwide. Based on a recent IDC study, VitalQIP customers see, on average, an ROI of over 900% with a payback period of 106 days.

The primary functions of VitalQIP are:

- Configuring network nodes with IP address, mask, gateway, etc., as well as manage and monitor the entire IP address management space and control DHCP configurations.
- Monitoring address usage to ensure efficient deployment.
- Configuring DNS servers with each node's name and IP address.
- Prepare environments for growing IP address space because of business drivers such as convergence, technology changes with VoIP and IMS, organization and company consolidation.

Key selling points:

- Lower personnel costs with reduction in infrastructure support costs
- Lower down time costs with reductions in operator errors and mis-configurations
- Increases productivity with consistent, accurate IP inventory and automated operations
- Provisions new services quickly
- Minimizes network vulnerabilities with VitalQIP and its add-on modules
- Reduces network expenses with centralized management of diverse DHCP/DNS infrastructure
- Evolve with new technologies and services: VoIP, ENUM, RFID, IPv6, mobile HSD and IP video





VitalQIP DNS/DHCP • IP Address Management Software	Comcodes
--	----------

DOCUMENTATION	
---------------	--

* VQIP paperback Documentation	300960754
--------------------------------	-----------

CLASSIC LICENSING	
-------------------	--

* VQIP Classic licensing CD-ROM	300955820
---------------------------------	-----------

* VQIP Classic licensing RTU, Base Package, up to 5K IP Addresses	300960770
---	-----------

* VQIP Classic licensing RTU, Up to 9,999 IP Addresses Supported	300955838
--	-----------

* VQIP Classic licensing RTU, 10,000 - 24,999 IP Addresses Supported	300955846
--	-----------

* VQIP Classic licensing RTU, 25,000 - 49,999 IP Addresses Supported	300955853
--	-----------

* VQIP Classic licensing RTU, 50,000 - 99,999 IP Addresses Supported	300955861
--	-----------

* VQIP Classic licensing RTU, 100,000 - 499,000 IP Addresses Supported	300955879
--	-----------

* VQIP Classic licensing RTU, 500,000 - 999,999 IP Addresses Supported	300955887
--	-----------

* VQIP Classic licensing RTU, 1M+ IP Addresses Supported	300955895
--	-----------

ACTIVE LICENSING	
------------------	--

* VQIP Active licensing CD-ROM	300955986
--------------------------------	-----------

* VQIP Active licensing RTU, Base Package, up to 5K IP Addresses	300960788
--	-----------

* VQIP Active licensing RTU, Up to 9,999 IP Addresses Supported	300955994
---	-----------

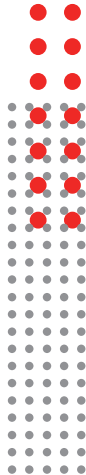
* VQIP Active licensing RTU, 10,000 - 24,999 IP Addresses Supported	300956000
---	-----------

* VQIP Active licensing RTU, 25,000 - 49,999 IP Addresses Supported	300956018
---	-----------

* VQIP Active licensing RTU, 50,000 - 99,999 IP Addresses Supported	300956026
---	-----------

* VQIP Active licensing RTU, 100,000 - 249,999 IP Addresses Supported	300956513
---	-----------

* VQIP Active licensing RTU, 250,000+ IP Addresses Supported	300956034
--	-----------



VitalQIP DNS/DHCP • IP Address Management Software	Comcodes
<b>VITALQIP ENHANCEMENT MODULES</b>	
* VQIP Services Manager RTU, Base Package, 5K IP Addresses	300955903
* VQIP Services Manager RTU, Up to 9,999 IP Addresses Supported	300955911
* VQIP Services Manager RTU, 10,000 - 24,999 IP Addresses Supported	300955929
* VQIP Services Manager RTU, 25,000 - 49,999 IP Addresses Supported	300955937
* VQIP Services Manager RTU, 50,000 - 99,999 IP Addresses Supported	300955945
* VQIP Services Manager RTU, 100,000 - 499,000 IP Addresses Supported	300955952
* VQIP Services Manager RTU, 500,000 - 999,999 IP Addresses Supported	300955960
* VQIP Services Manager RTU, 1M+ IP Addresses Supported	300955978
* VQIP Audit Manager/Usage Based Billing RTU, Base Package, 5K IP Addresses Supported	300956042
* VQIP Audit Manager/Usage Based Billing RTU, Up to 9,999 IP Addresses Supported	300956059
* VQIP Audit Manager/Usage Based Billing RTU, 10,000 - 24,999 IP Addresses Supported	300956067
* VQIP Audit Manager/Usage Based Billing RTU, 25,000 - 49,999 IP Addresses Supported	300956075
* VQIP Audit Manager/Usage Based Billing RTU, 50,000 - 99,999 IP Addresses Supported	300956083
* VQIP Audit Manager/Usage Based Billing RTU, 100,000 - 499,000 IP Addresses Supported	300956091
* VQIP Audit Manager/Usage Based Billing RTU, 500,000 - 999,999 IP Addresses Supported	300956109
* VQIP Audit Manager/Usage Based Billing RTU, 1M+ IP Addresses Supported	300956117

## VitalQIP DNS/DHCP • IP Address Management Software

## Comcodes

### VITALQIP ENHANCEMENT MODULES

* VQIP Registration Manager RTU, Base Package, 5K IP Addresses	300956125
* VQIP Registration Manager RTU, Up to 9,999 IP Addresses Supported	300956133
* VQIP Registration Manager RTU, 10,000 - 24,999 IP Addresses Supported	300956141
* VQIP Registration Manager RTU, 25,000 - 49,999 IP Addresses Supported	300956158
* VQIP Registration Manager RTU, 50,000 - 99,999 IP Addresses Supported	300956166
* VQIP Registration Manager RTU, 100,000 - 499,000 IP Addresses Supported	300956174
* VQIP Registration Manager RTU, 500,000 - 999,999 IP Addresses Supported	300956182
* VQIP Registration Manager RTU, 1M+ IP Addresses Supported	300956190
* VQIP ENUM Manager RTU, Base Package, 5K IP Addresses Supported	300956208
* VQIP ENUM Manager RTU, Up to 9,999 IP Addresses Supported	300956216
* VQIP ENUM Manager RTU, 10,000 - 24,999 IP Addresses Supported	300956224
* VQIP ENUM Manager RTU, 25,000 - 49,999 IP Addresses Supported	300956232
* VQIP ENUM Manager RTU, 50,000 - 99,999 IP Addresses Supported	300956240
* VQIP ENUM Manager RTU, 100,000 - 499,000 IP Addresses Supported	300956257
* VQIP ENUM Manager RTU, 500,000 - 999,999 IP Addresses Supported	300956265
* VQIP ENUM Manager RTU, 1M+ IP Addresses Supported	300956273

VitalQIP DNS/DHCP • IP Address Management Software	Comcodes
<b>VITALQIP ENHANCEMENT MODULES</b>	
* VQIP Workflow Manager CD-ROM	300956281
* VQIP Workflow Manager RTU, Base Package, 100K - 499K IP Addresses Supported	300960762
* VQIP Workflow Manager RTU, 500K - 999K IP Addresses Supported	300956299
* VQIP Workflow Manager RTU, 1M+ IP Addresses Supported	300956307
* VQIP Workflow Manager SDK RTU, per seat	300956315
Oracle License required - must be sourced directly from the vendor	
* VQIP SNMP RTU, Base Package, 5K IP Addresses	300956323
* VQIP SNMP RTU, Up to 9,999 IP Addresses Supported	300956331
* VQIP SNMP RTU, 10,000 - 24,999 IP Addresses Supported	300956349
* VQIP SNMP RTU, 25,000 - 49,999 IP Addresses Supported	300956356
* VQIP SNMP RTU, 50,000 - 99,999 IP Addresses Supported	300956364
* VQIP SNMP RTU, 100,000 - 499,000 IP Addresses Supported	300956372
* VQIP SNMP RTU, 500,000+ IP Addresses Supported	300956380
* VQIP DHCP Rules Manager RTU, 25-49 copies	300956398
* VQIP DHCP Rules Manager RTU, 50-74 copies	300956406
* VQIP DHCP Rules Manager RTU, 75-100 copies	300956414
* VQIP DHCP Rules Manager RTU, 100+ copies	300956422